

CARTA DE LLEGADA NORMALIZADA  
VUELO POR INSTRUMENTOS (STAR)-OACI

TA 6000  
VAR 0° (2020)

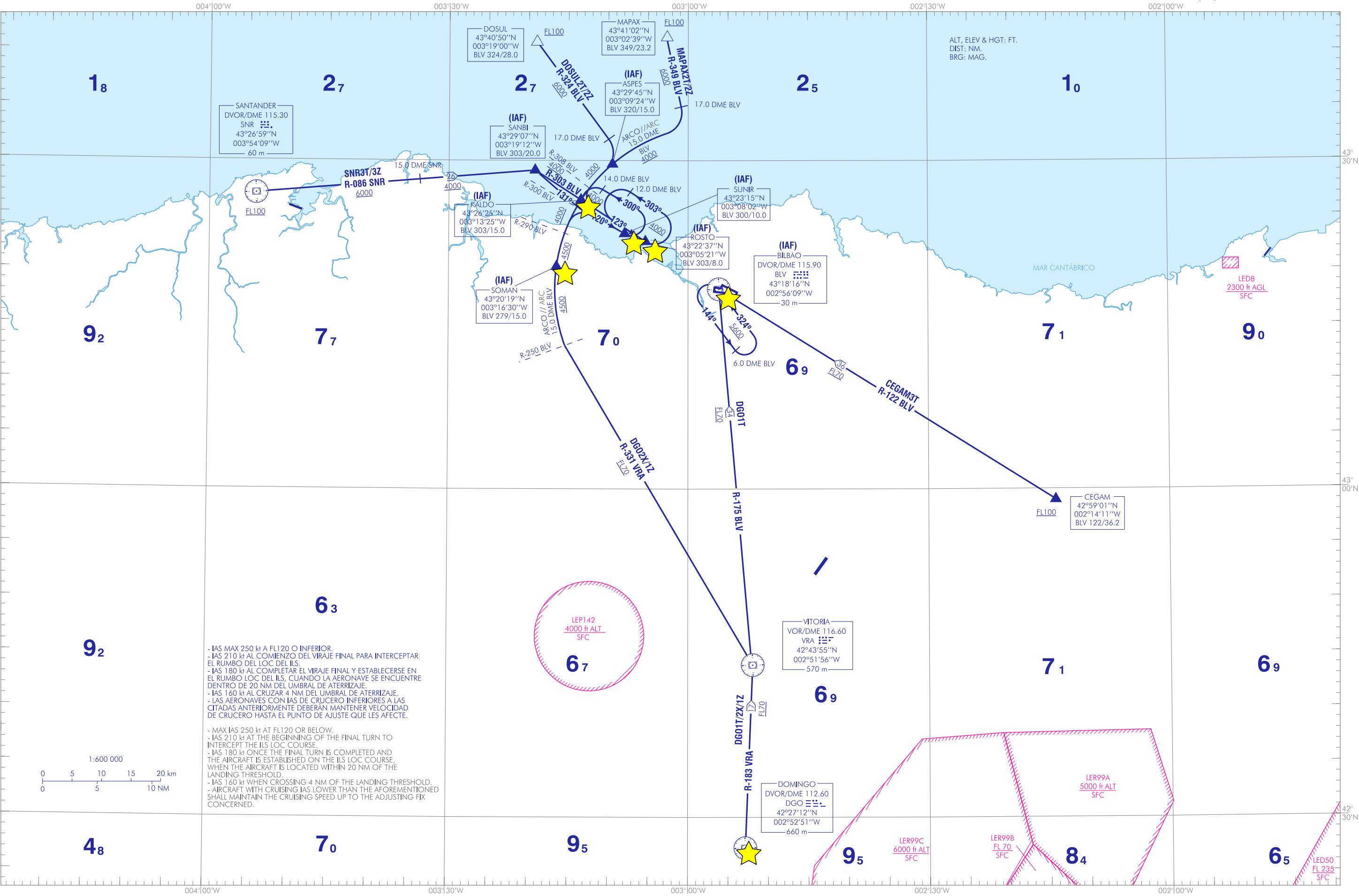
APP 127.450  
TWR 118.500

CEGAM3T  
MAPAX2T/2Z

GO1T/2X/1Z  
SNR3T/3Z

BILBAO  
RWY 12  
DOSUL2T/2Z

CAMBIO: DECLINACIÓN MAGNÉTICA, RUMBOS Y RADIALES; AMA, COORD DVO EN LUGAR DE DME DGO Y SNR. NOTAS:  
CHANGES: MAGNETIC VARIATION, HEADINGS AND RADIALS, AMA, COORD DVO INSTEAD OF DME DGO AND SNR. NOTES.



INTENCIONADAMENTE EN BLANCO  
INTENTIONALLY BLANK

**BILBAO AD**

**LLEGADAS NORMALIZADAS POR INSTRUMENTOS (STAR)**

**PISTA 12**

**LLEGADA CEGAM TRES TANGO (CEGAM3T)**  
CEGAM, DVOR/DME BLV (IAF).

**LLEGADA DOMINGO UNO TANGO (DGO1T)**  
DVOR/DME DGO, VOR/DME VRA, DVOR/DME BLV (IAF).

→ **LLEGADA DOMINGO DOS X-RAY (DGO2X)**  
DVOR/DME DGO, VOR/DME VRA, R-331 VRA/R-250 BLV, ARCO 15.0 DME BLV, SOMAN, ARCO 15.0 DME BLV, KALDO (IAF), ROSTO (IAF).

→ **LLEGADA DOMINGO UNO ZULU (DGO1Z)**  
DVOR/DME DGO, VOR/DME VRA, R-331 VRA/R-250 BLV, ARCO 15.0 DME BLV, SOMAN (IAF), ARCO 15.0 DME BLV, R-300 BLV, SUNIR (IAF).

→ **LLEGADA DOSUL DOS TANGO (DOSUL2T)**  
DOSUL, R-324 BLV/17.0 DME BLV, ARCO 15.0 DME BLV, ASPES (IAF), ARCO 15.0 DME BLV/R-300 BLV, SUNIR (IAF).

→ **LLEGADA DOSUL DOS ZULU (DOSUL2Z)**  
DOSUL, R-324 BLV/17.0 DME BLV, ARCO 15.0 DME BLV, KALDO (IAF), ROSTO (IAF).

→ **LLEGADA MAPAX DOS TANGO (MAPAX2T)**  
MAPAX, R-349 BLV/17.0 DME BLV, ARCO 15.0 DME BLV, ASPES (IAF), ARCO 15.0 DME BLV/R-300 BLV, SUNIR (IAF).

**LLEGADA MAPAX DOS ZULU (MAPAX2Z)**  
MAPAX, R-349 BLV/17.0 DME BLV, ARCO 15.0 DME BLV, KALDO (IAF), ROSTO (IAF).

→ **LLEGADA SANTANDER TRES TANGO (SNR3T)**  
DVOR/DME SNR, R-086 SNR/15.0 DME SNR, SANBI (IAF), RUTA MAGNÉTICA 131° / R-300 BLV, SUNIR (IAF).

**LLEGADA SANTANDER TRES ZULU (SNR3Z)**  
DVOR/DME SNR, R-086 SNR/15.0 DME SNR, SANBI, KALDO (IAF), ROSTO (IAF).

**STANDARD INSTRUMENT ARRIVALS (STAR)**

**RUNWAY 12**

**CEGAM THREE TANGO ARRIVAL (CEGAM3T)**  
CEGAM, DVOR/DME BLV (IAF).

**DOMINGO ONE TANGO ARRIVAL (DGO1T)**  
DVOR/DME DGO, VOR/DME VRA, DVOR/DME BLV (IAF).

**DOMINGO TWO X-RAY ARRIVAL (DGO2X)**  
DVOR/DME DGO, VOR/DME VRA, R-331 VRA/R-250 BLV, ARC 15.0 DME BLV, SOMAN, ARC 15.0 DME BLV, KALDO (IAF), ROSTO (IAF).

**DOMINGO ONE ZULU ARRIVAL (DGO1Z)**  
DVOR/DME DGO, VOR/DME VRA, R-331 VRA/R-250 BLV, ARC 15.0 DME BLV, SOMAN (IAF), ARC 15.0 DME BLV, R-300 BLV, SUNIR (IAF).

**DOSUL TWO TANGO ARRIVAL (DOSUL2T)**  
DOSUL, R-324 BLV/17.0 DME BLV, ARC 15.0 DME BLV, ASPES (IAF), ARC 15.0 DME BLV/R-300 BLV, SUNIR (IAF).

**DOSUL TWO ZULU ARRIVAL (DOSUL2Z)**  
DOSUL, R-324 BLV/17.0 DME BLV, ARC 15.0 DME BLV, KALDO (IAF), ROSTO (IAF).

**MAPAX TWO TANGO ARRIVAL (MAPAX2T)**  
MAPAX, R-349 BLV/17.0 DME BLV, ARC 15.0 DME BLV, ASPES (IAF), ARC 15.0 DME BLV/R-300 BLV, SUNIR (IAF).

**MAPAX TWO ZULU ARRIVAL (MAPAX2Z)**  
MAPAX, R-349 BLV/17.0 DME BLV, ARC 15.0 DME BLV, KALDO (IAF), ROSTO (IAF).

**SANTANDER THREE TANGO ARRIVAL (SNR3T)**  
DVOR/DME SNR, R-086 SNR/15.0 DME SNR, SANBI (IAF), MAGNETIC TRACK 131° / R-300 BLV, SUNIR (IAF).

**SANTANDER THREE ZULU ARRIVAL (SNR3Z)**  
DVOR/DME SNR, R-086 SNR/15.0 DME SNR, SANBI, KALDO (IAF), ROSTO (IAF).

**INTENCIONADAMENTE EN BLANCO**  
**INTENTIONALLY BLANK**